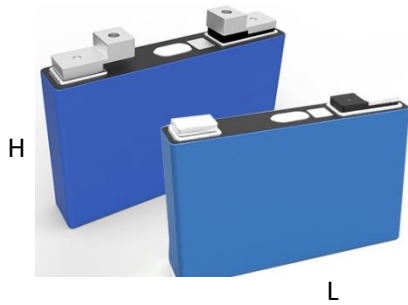


# C2-NCM50

LFP Lithium-ion battery



C2-NCM50S - Screw terminal

C2-NCM50W - Welding Terminal

## Specifications

Item	Value	Note
Nominal Voltage (V)	3.72	1/3C
Operating Voltage (V)	min	-5 °C - 55 °C
	max	
Nominal Capacity (Ah)	50	0.5C, 25±2°C
Nominal Energy (kWh)	0.1860	0.5C, 25±2°C
End of Life Residual Capacity (Ah)	80	≥80% of initial capacity
Module Weight (kg)	0.91	± 0.5
Dimension L (mm)	149	± 1.5
Dimension W (mm)	26.85	± 1.5
Dimension H (mm)	101.75, 111.75	Welding, Screw
Module Self Discharge	≤3.5%	100% SOC, 25°C, 1month
Max Continuous Charge Current (A)	100	2C, 30min. 80% SOC
Max Continuous Discharge Current (A)	50	1C
Temperature Operation (Charge)	-15 ~ 55°C	
Temperature Operation (Discharge)	-30 ~ 55°C	
Temperature Operation (Storage)	-30 ~ 55°C	60 °C 30 days, irreversible capacity loss
SOC Operating Range %	10 ~ 90%	
Cycle Life	2000 cycles	1C/1C, 80% DOD 25°C
Shipping Capacity (SOC)	~ 30%	